

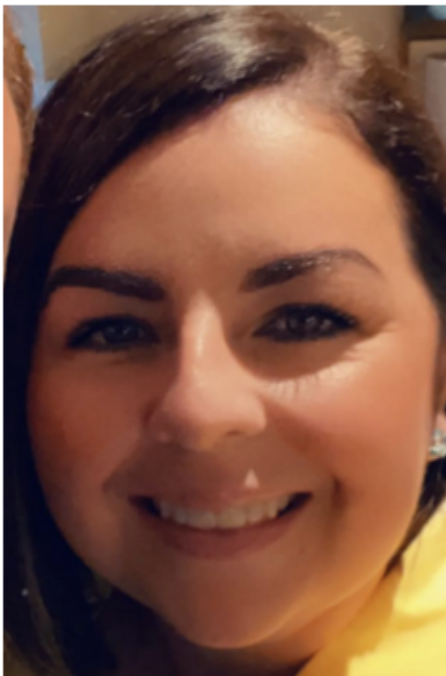


01623 827 827821 awsafety.co.uk sales@awsafety.co.uk

COMPLIANCE CORNER

YOUR SEPTEMBER 2023 SAFETY NEWSLETTER

NEW TEAM MEMBERS



A warm welcome to our newest recruit Samantha, who is joining us as PA to the director.

Samantha is keen to support the MD in his vision for growth and development here at AW Safety Management.

E-LEARNING



Course contents include Health & Safety, HR and Business Compliance, Care, Management and Construction. Let's see how we can help your business.

JOB VACANCIES

LEAD RECRUITMENT CONSULTANT

An exciting opportunity to join AW Safety as their lead recruitment consultant. We are looking for a motivated, driven, high energy to join the consultancy team.

PROJECT PLANNER / PROJECT SCHEDULER

We are recruiting a project planner / project scheduler to manage onsite the master project time schedule, updating tasks on a daily basis, monitoring projects, coordinating timelines and communicating risks.

HEALTH & SAFETY NEWS



HSE has published the annual figures for Mesothelioma, a cancer caused by past exposure to asbestos. The figures show 2,268 people died from the disease in 2021. This is a fall of 302 compared with the 2,570 deaths in 2020 and substantially lower than the average of 2,520 deaths per year over the period 2012-2019.

Asbestos-related diseases take decades to develop. Most people with them today will largely have been exposed before the tightening of controls and the use of asbestos was banned in 1999.

The current regulations state that where asbestos is present in buildings it must be managed, maintained in a good condition, and stay undisturbed. If this level of protection cannot be achieved, then asbestos must be removed.

These regulations have led to a significant reduction in exposure and the number of people developing asbestos-related illness is predicted to fall as we get further from the date asbestos was banned in 1999. Prior to that point, asbestos was used extensively in construction.

HSE's approach to asbestos management is based on evidence that is constantly reviewed. HSE has recently launched a campaign called Asbestos & You to raise awareness of the risks associated with the dangerous substance.

Here at AW Safety, we can help ensure you are fully protected- get in touch

GAP AUDIT



Navigating the complexities of Health & Safety regulations can be overwhelming, but it doesn't have to be.

AW Safety Management offers an insightful 3-stage GAP analysis, crafted to bring peace of mind and operational excellence:

Stage 1: Site Visit - Uncover potential hazards, assess documentation, and gather staff insights.

Stage 2: Producing Your Report - In-depth review of practices, highlighting strengths, weaknesses, and growth opportunities.

Stage 3: Action Plan - Receive a clear, traffic-light-coded plan, guiding you toward compliance and safety.

Unlock the pathway to a safer business environment, please reply to connect directly.



We have an online learning platform called 'iHASCO' this can allow you and your colleagues to access up to 100 + Health and Safety courses to help assist with your companies Health, Safety, and general well-being.

This platform comes with full support and training, however, is very simple to use, please contact us for a free demo.

